

**PROTECT OUR  
OCEAN JEWELS ...**

**Stop washing  
household & garden  
chemicals down  
storm drains!**

50% of the Great Barrier coral reef has been affected by bleaching, due to increased CO<sub>2</sub> gas emissions caused by human activity, and land based toxins and nutrient sources entering the ocean.

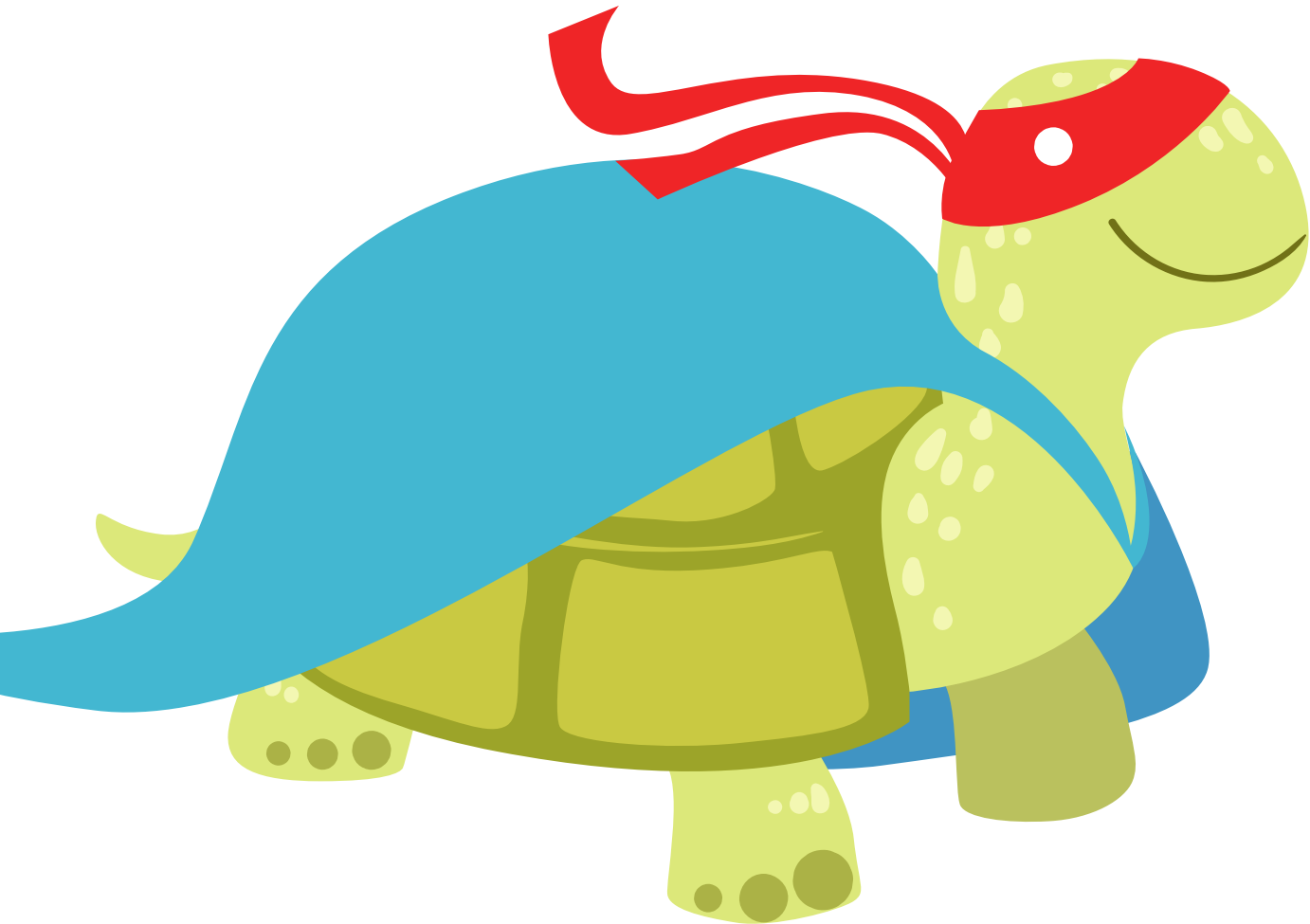
**Explorers.ie**



*Foras na Mara  
Marine Institute*



The Explorers Education Programme is funded by the Marine Institute, Ireland's state agency responsible for marine research and development



**Climatic conditions are changing the temperatures of the sand in tropical and subtropical parts of the world.**

**This is causing more Green Turtle females hatching than males.**

***STOP CLIMATE CHANGE AND SAVE THE TURTLE!***  
***SLOW DOWN — Take time to enjoy the sun, sand and surf!***  
**Explorers.ie**



*Foras na Mara*  
*Marine Institute*



The Explorers Education Programme is funded by the Marine Institute, Ireland's state agency responsible for marine research and development



**THERE'S NO SPACE  
FOR WASTE!**  
**Use sustainable food and  
resources to help protect  
our marine environment!**  
**Reduce, Reuse  
and Recycle!**

**If the global population reaches 9.6 billion by 2050, the equivalent of almost three planets will be required to provide the natural resources needed to sustain our current lifestyles.**

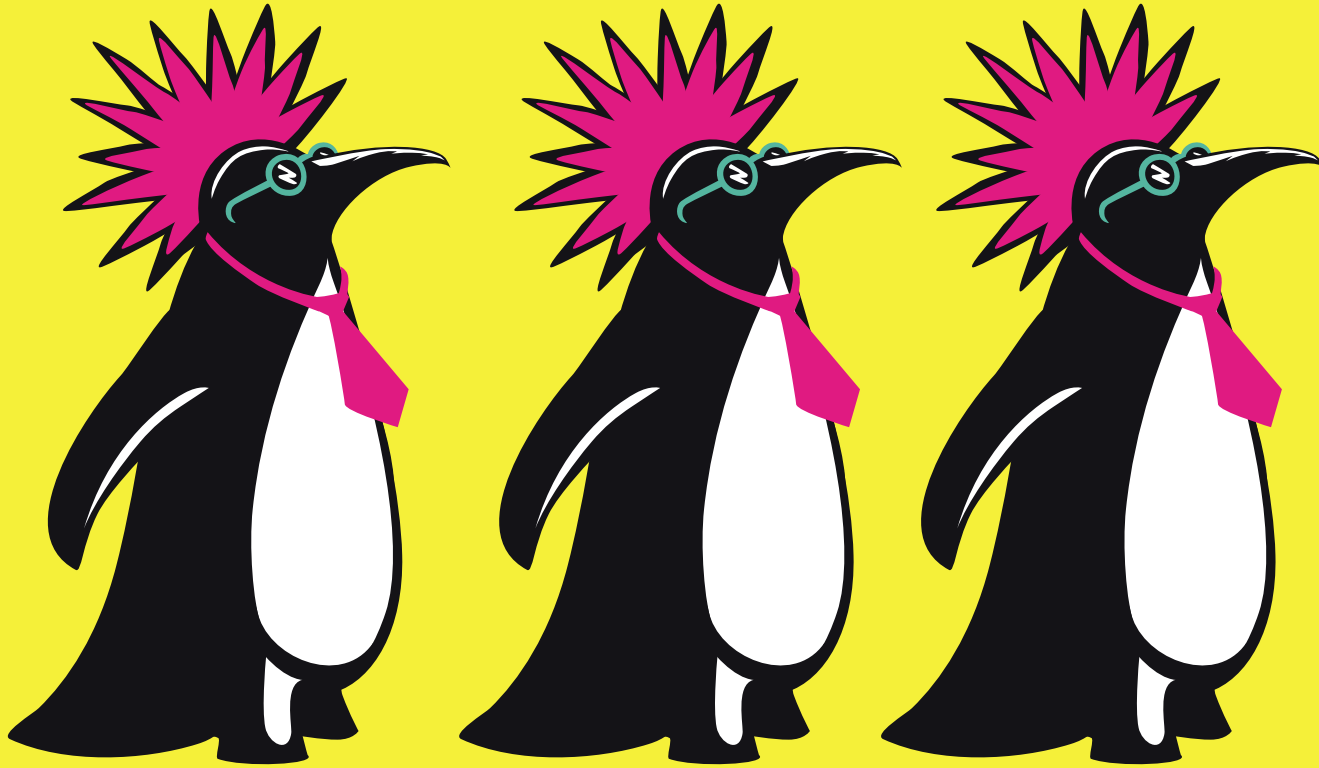
**[Explorers.ie](http://Explorers.ie)**



*Foras na Mara  
Marine Institute*



The Explorers Education Programme is funded by the Marine Institute, Ireland's state agency responsible for marine research and development



**Penguins love to eat krill!  
Climate change is resulting in  
ice sheets melting in Antarctica,  
causing krill populations to  
decrease.  
This means penguins have to  
migrate far away to find food in  
new habitats. This is resulting  
in reduced penguin populations!**

**Remember ... EAT ALL OF YOUR LUNCH — don't waste food!**  
**Explorers.ie**



*Foras na Mara  
Marine Institute*



The Explorers Education Programme is funded by the Marine Institute,  
Ireland's state agency responsible for marine research and development



**Stop heating  
up the Planet -  
PUT ON YOUR  
WOOLY SOCKS  
& JUMPER!**

**With the reduction of ice in the Arctic Ocean, this makes it difficult for polar bears to hunt seals and find food. This is causing a threat to their population.**

**Explorers.ie**



*Foras na Mara  
Marine Institute*



The Explorers Education Programme is funded by the Marine Institute, Ireland's state agency responsible for marine research and development



**SUPPORT MARINE  
RESEARCH &  
DEVELOPMENT**  
to help us learn about the  
effects of climate change.

Scientists are detecting a stronger link between the planet's warming and its changing weather patterns. This means hotter heat waves, longer droughts, bigger storm surges & greater snowfall.

**Explorers.ie**



*Foras na Mara  
Marine Institute*



The Explorers Education Programme is funded by the Marine Institute, Ireland's state agency responsible for marine research and development



**USE  
CLEAN ENERGY...**

**Don't forget to  
turn off the lights  
AND plant a tree  
to save the SEA !!!**

**The burning of coal, natural gas, and oil for electricity and heat is the largest single source of global greenhouse gas emissions.**

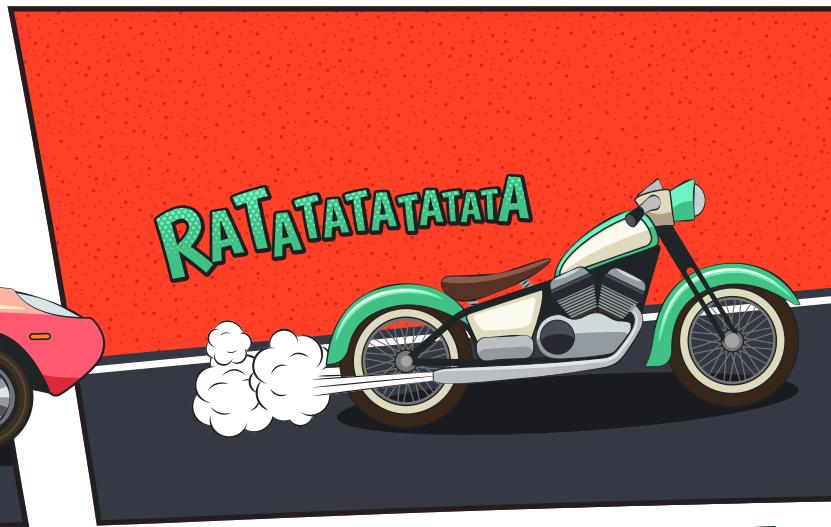
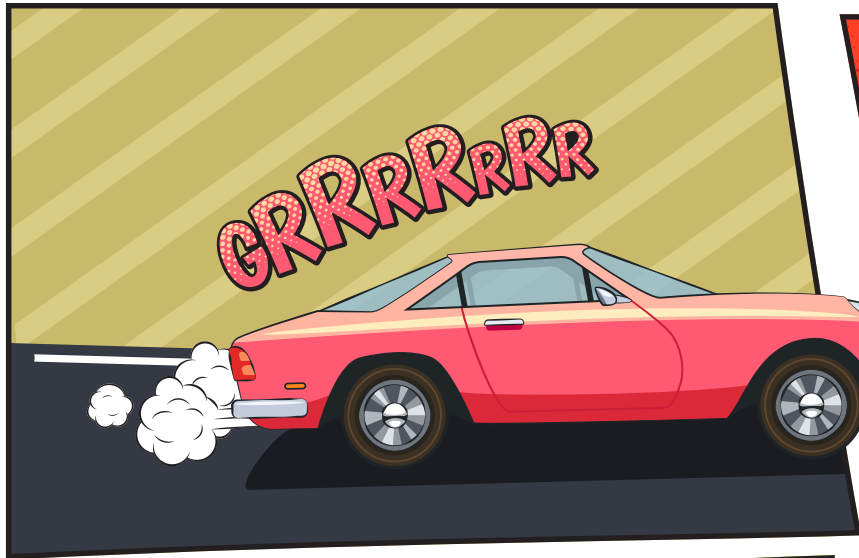
**Explorers.ie**



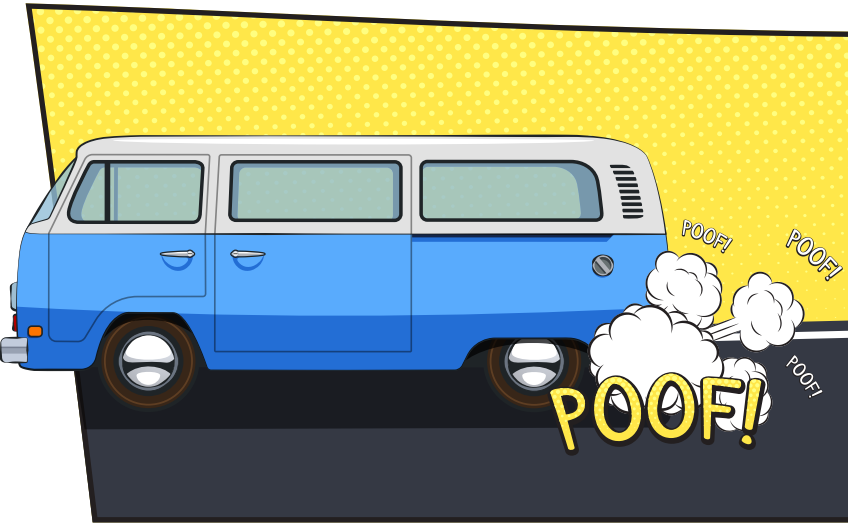
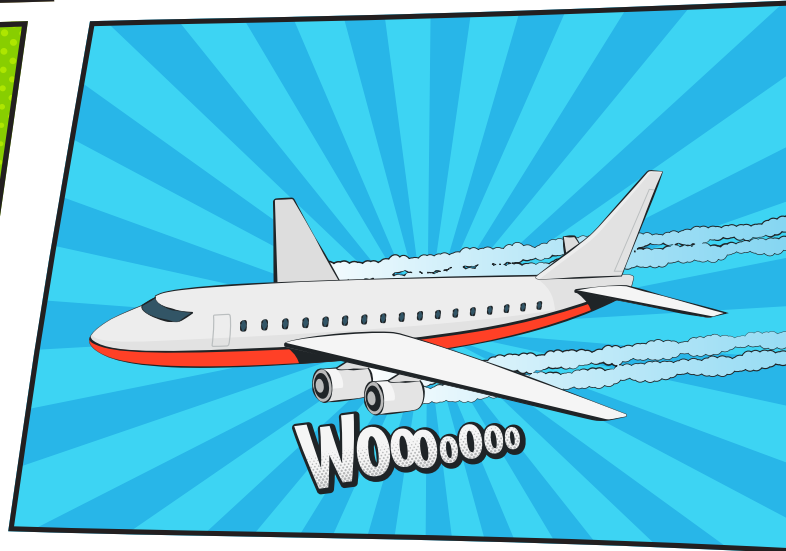
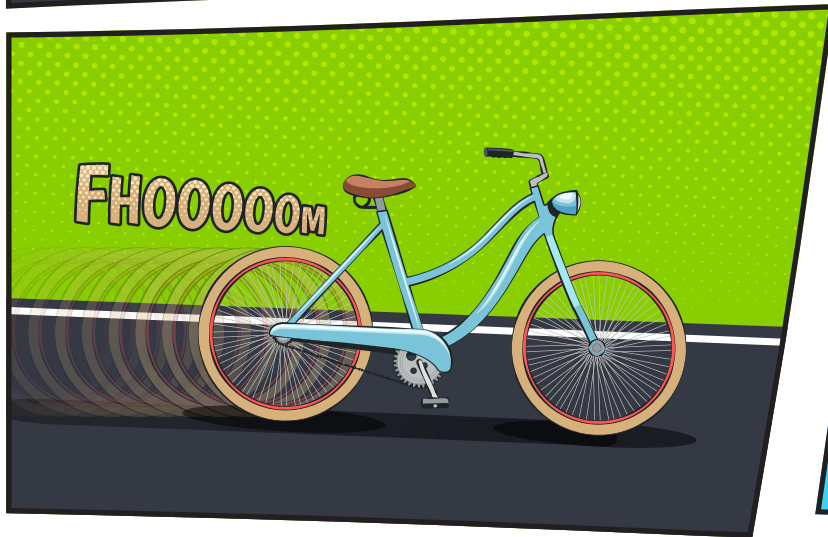
*Foras na Mara  
Marine Institute*



The Explorers Education Programme is funded by the Marine Institute, Ireland's state agency responsible for marine research and development



**ITS TIME FOR ZERO emissions!**  
**Use public transport, carpool, walk or cycle!**



**Ocean Acidity is 30% higher since the industrial revolution, and is on track to be 50% HIGHER by 2100!**

**Explorers.ie**



*Foras na Mara  
Marine Institute*



The Explorers Education Programme is funded by the Marine Institute, Ireland's state agency responsible for marine research and development



**REMEMBER YOUR 'R's**  
*when helping protect*  
*our Ocean!*

**Rethink • Refuse • Reduce**  
**• Reuse • Refurbish**  
**Repair • Repurpose •**  
**Recycle!!**

**Did you know 90% of Earth's warming has occurred since 1950.**  
**The majority of this increase is due to human consumption and lifestyles.**

**Explorers.ie**



*Foras na Mara*  
*Marine Institute*



The Explorers Education Programme is funded by the Marine Institute,  
Ireland's state agency responsible for marine research and development